



HAWAII STATEWIDE ASSESSMENT PROGRAM
Spring 2007 ~ 2012 Results

*Presentation to the
Hawaii State Board of Education
July 17, 2012*

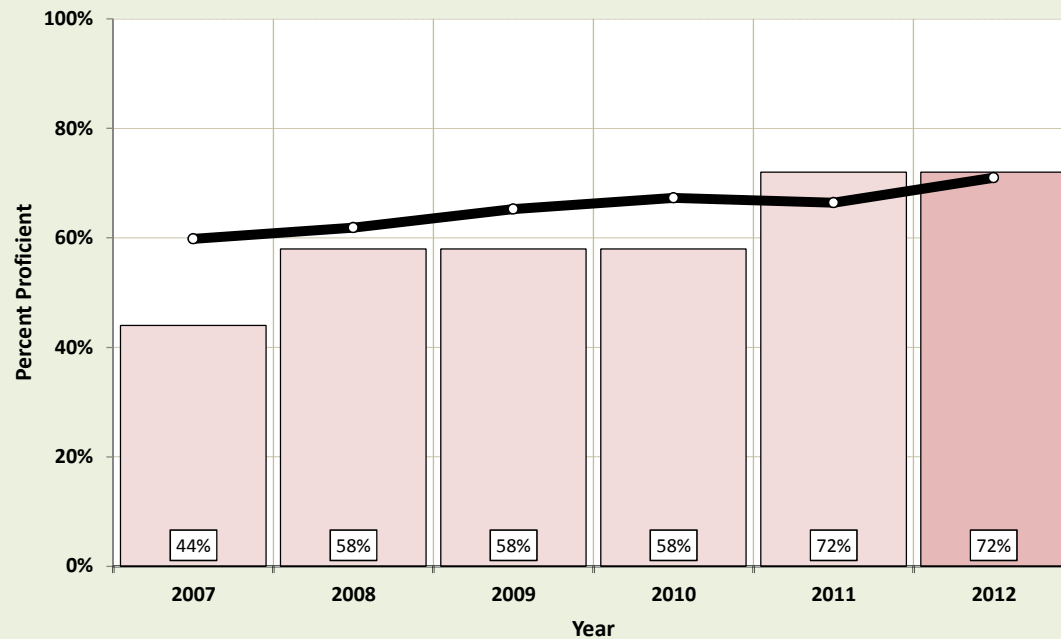
*Hawaii Department of Education
Systems Accountability Office
Student Assessment Section*



Hawaii Statewide Assessment Program

- ❖ *The Hawaii Statewide Assessment Program (HSAP) contains:*
 - ❖ *the Hawaii State Assessment (HSA) in English and Hawaiian languages*
 - ❖ *the Hawaii State Alternate Assessment (HSAA)*
- ❖ *The HSAP is a set of criterion-referenced assessments aligned to the Hawaii Content and Performance Standards (HCPS III)*
- ❖ *All students attending Hawaii public and public charter schools are to take one of the two assessments*
- ❖ *The number of students administered the HSAP are:*
 - ❖ *HSA approximately 96,300 students*
 - ❖ *HSAA approximately 400 students*

**Hawaii State Assessment
Reading Participation and Performance
2007 ~ 2012**

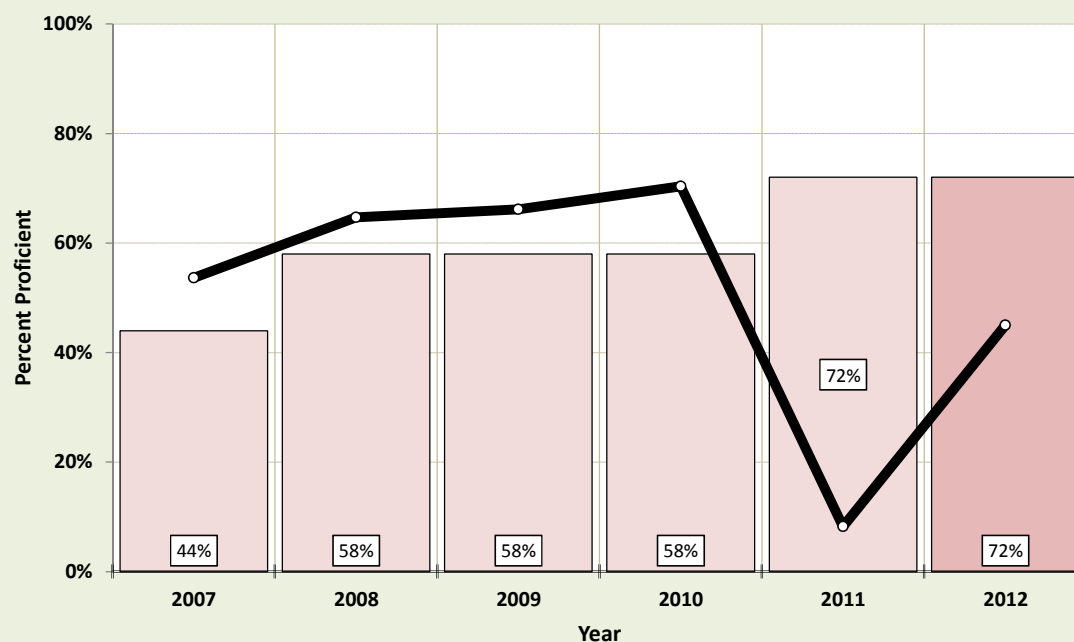


Hawaii State Assessment (HSA)

- School Year 2010-2011 was first year of testing students with an online computer adaptive assessment
- Schools had the flexibility to provide students with up to three opportunities to take the tests
- If a student took the tests more than once, the student's highest score was used for official reporting
- Online testing provided immediate results to student and school

	Year					
	2007	2008	2009	2010	2011	2012
Reading AMO	44%	58%	58%	58%	72%	72%
Percent Proficient	60%	62%	65%	67%	66%	71%
Participation Count	91,661	91,503	91,830	92,306	94,577	96,340
Eligible Count	N/A	93,224	93,121	93,336	95,383	97,091
Percent Participation	N/A	98%	99%	99%	99%	99%

*Hawaii State Alternate Assessment
Reading Participation and Performance
2007 ~ 2012*

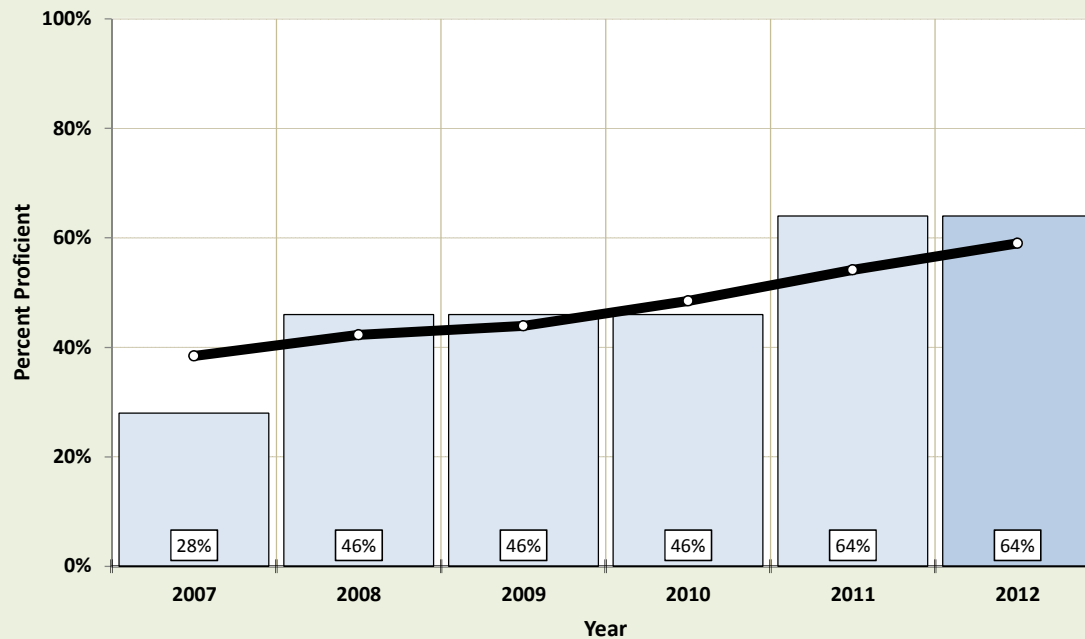


Hawaii State Alternate Assessment (HSA)

- School Year 2010-2011 was first year of a new test design to meet the terms and conditions of the Compliance Agreement with USDOE
- New design:
 - ◆ Focused on student enrolled grade level standards/benchmarks
 - ◆ Required independent student responses using allowable accommodations
 - ◆ Evidence submitted was scored by trained professional external scorers
 - ◆ Focused to meet federal mandate for alternate assessments using academic achievement standards
- Approximately 180 students (28%) had parents submit written requests that their child be exempted from the test

	Year					
	2007	2008	2009	2010	2011	2012
Reading AMO	44%	58%	58%	58%	72%	72%
Percent Proficient	54%	65%	66%	70%	8%	45%
Participation Count	315	433	526	601	448	391
Eligible Count	N/A	557	646	721	683	643
Percent Participation	N/A	78%	81%	83%	66%	61%

**Hawaii State Assessment
Mathematics Participation and Performance
2007 ~ 2012**

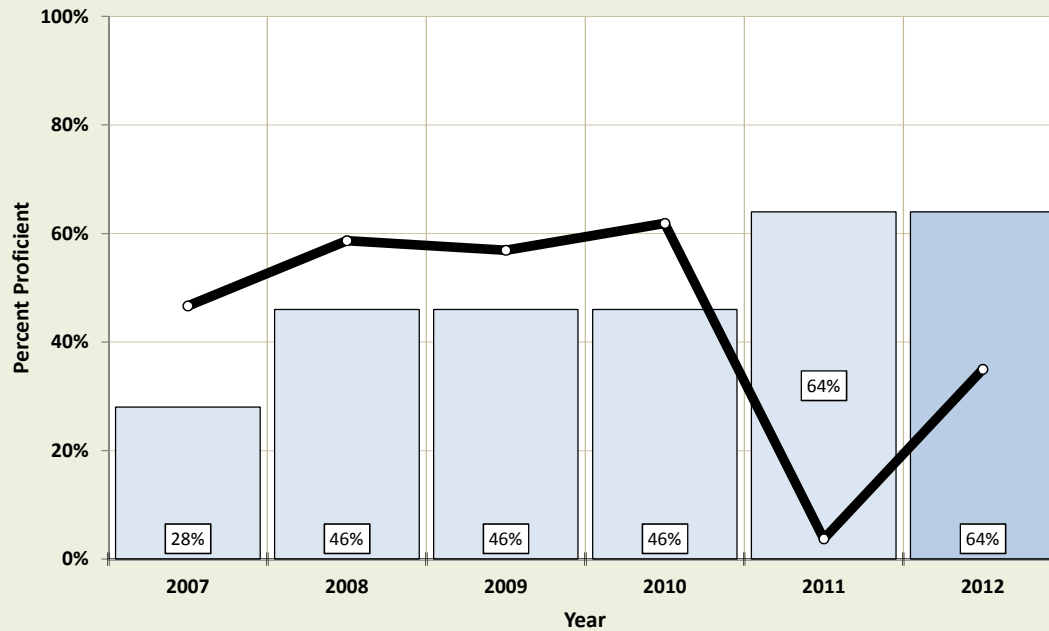


Hawaii State Assessment (HSA)

- School Year 2010-2011 was first year of testing students with an online computer adaptive assessment
- Schools had the flexibility to provide students with up to three opportunities to take the tests
- If a student took the tests more than once, the student's highest score was used for official reporting
- Online testing provided immediate results to student and school

	Year					
	2007	2008	2009	2010	2011	2012
Mathematics AMO	28%	46%	46%	46%	64%	64%
Percent Proficient	38%	42%	44%	48%	54%	59%
Participation Count	91,596	91,475	91,706	92,278	94,548	96,240
Eligible Count	N/A	93,224	93,121	93,336	95,383	97,091
Percent Participation	N/A	98%	98%	99%	99%	99%

**Hawaii State Alternate Assessment
Mathematics Participation and Performance
2007 ~ 2012**

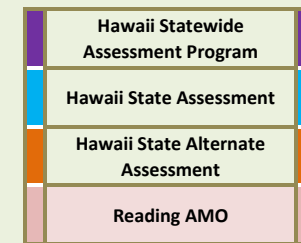
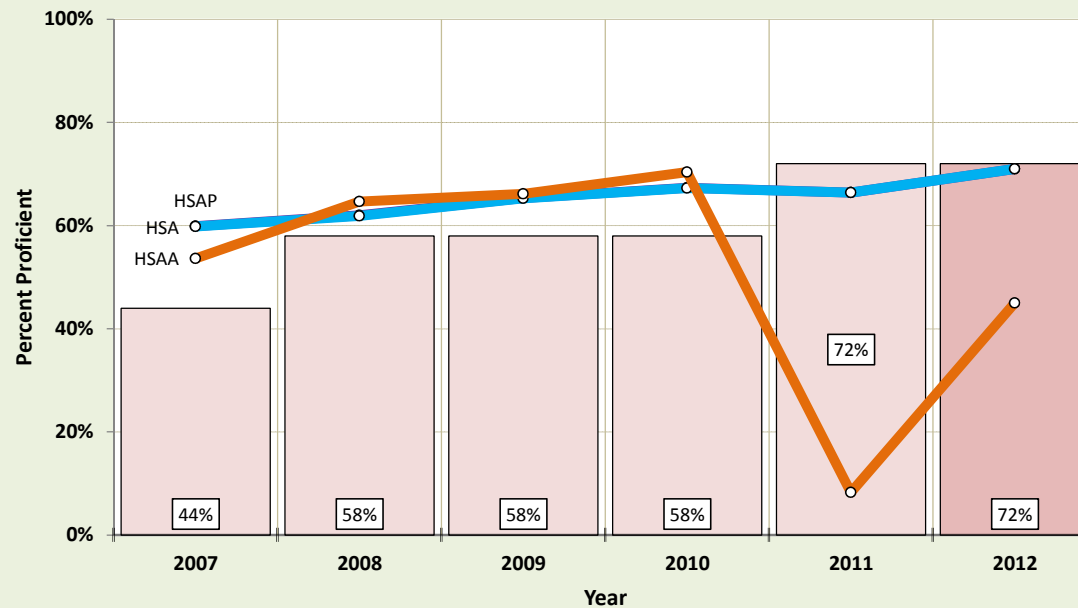


Hawaii State Alternate Assessment (HSAA)

- School Year 2010-2011 was first year of a new test design to meet the terms and conditions of the Compliance Agreement with USDOE
- New design:
 - ♦ Focused on student enrolled grade level standards/benchmarks
 - ♦ Required independent student responses using allowable accommodations
 - ♦ Evidence submitted was scored by trained professional external scorers
 - ♦ Focused to meet federal mandate for alternate assessments using academic achievement standards
- Approximately 180 students (28%) had parents submit written requests that their child be exempted from the test

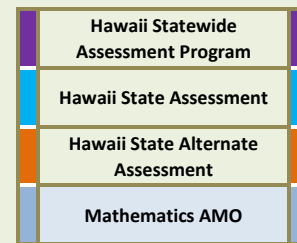
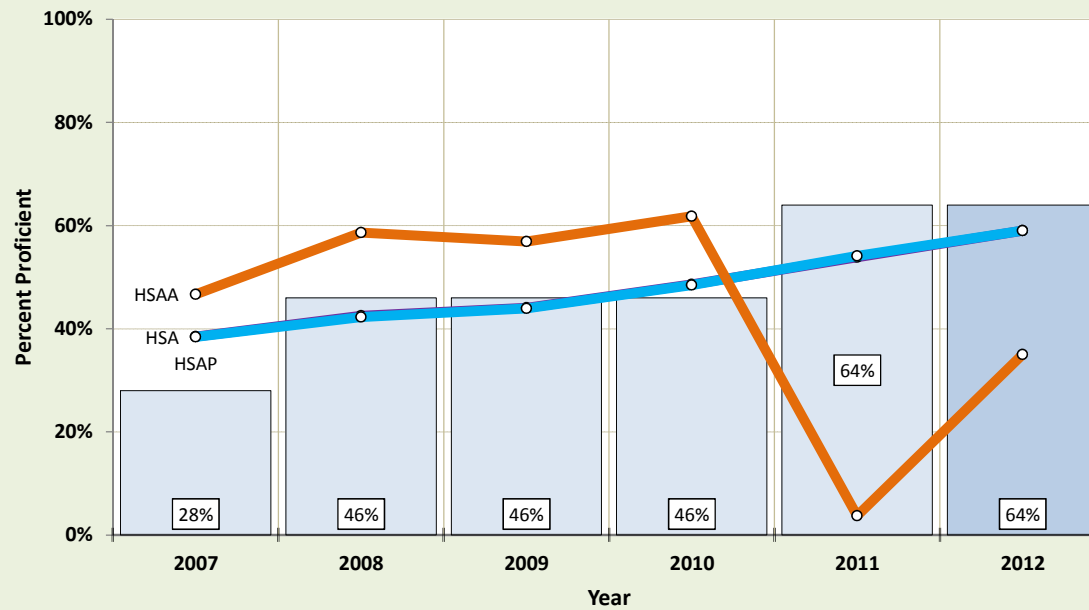
	Year					
	2007	2008	2009	2010	2011	2012
Mathematics AMO	28%	46%	46%	46%	64%	64%
Percent Proficient	47%	59%	57%	62%	4%	35%
Participation Count	315	433	529	600	456	399
Eligible Count	N/A	557	646	721	683	643
Percent Participation	N/A	78%	82%	83%	67%	62%

*Hawaii Statewide Assessment Program
Reading Percent Proficient
2007~2012*



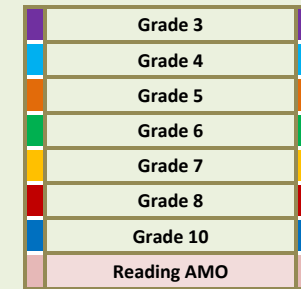
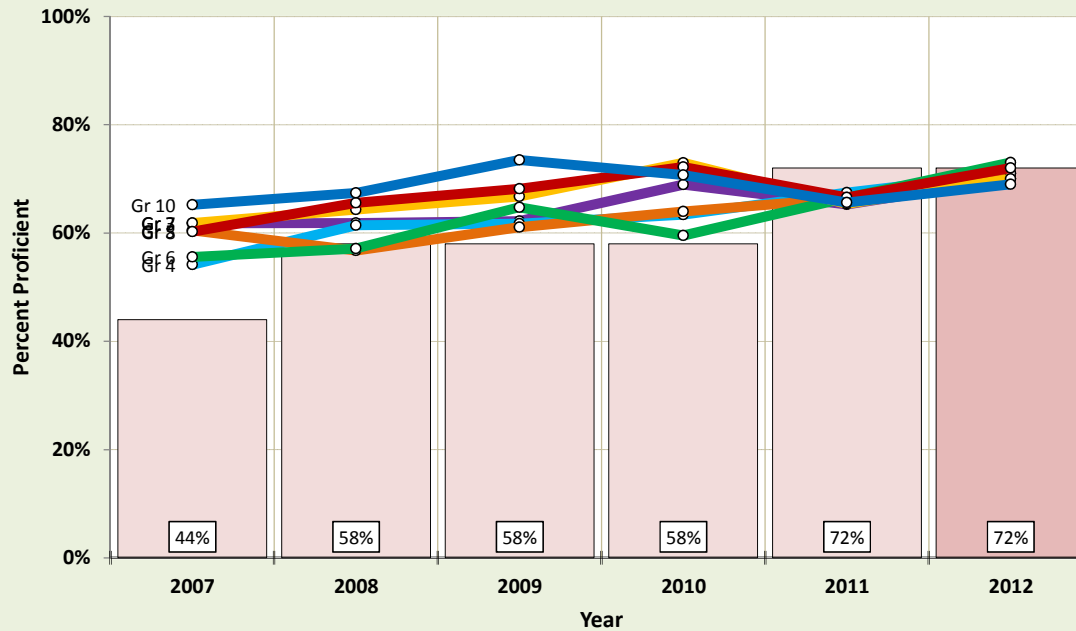
		Year					
		2007	2008	2009	2010	2011	2012
	Reading AMO	44%	58%	58%	58%	72%	72%
	HSAP	60%	62%	65%	67%	66%	71%
	HSA	60%	62%	65%	67%	66%	71%
	HSAA	54%	65%	66%	70%	8%	45%

*Hawaii Statewide Assessment Program
Mathematics Percent Proficient
2007~2012*

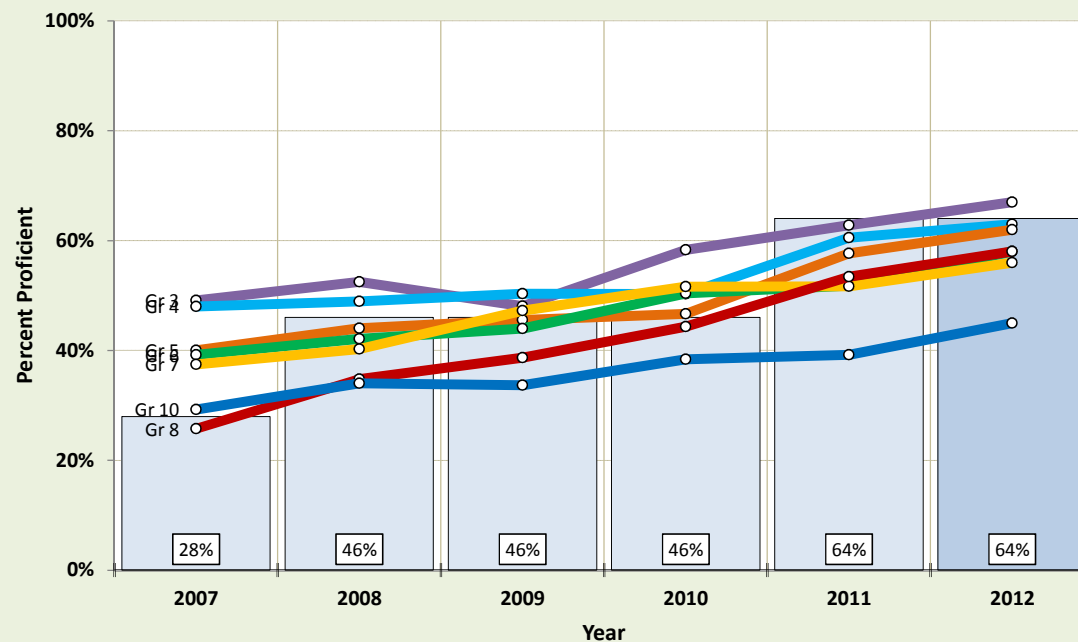


	Year					
	2007	2008	2009	2010	2011	2012
Math AMO	28%	46%	46%	46%	64%	64%
HSAP	39%	43%	44%	49%	54%	59%
HSA	38%	42%	44%	48%	54%	59%
HSAA	47%	59%	57%	62%	4%	35%

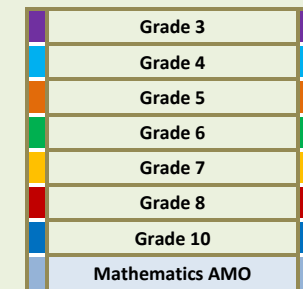
*Hawaii Statewide Assessment Program
Reading Percent Proficient
2007~2012*



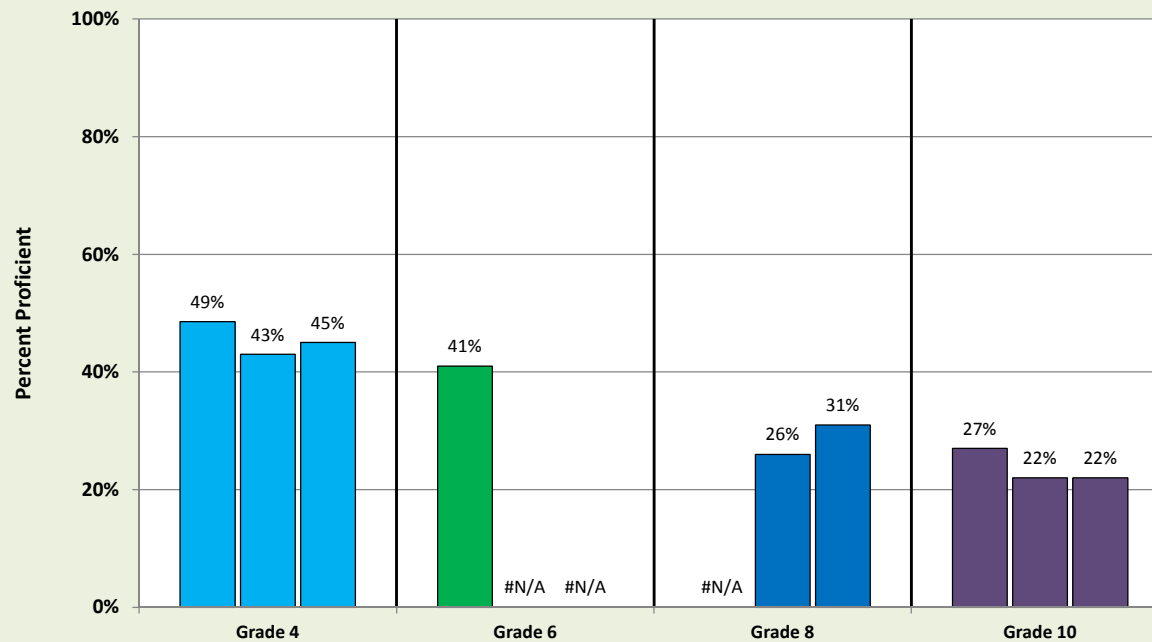
	Year					
	2007	2008	2009	2010	2011	2012
Reading AMO	44%	58%	58%	58%	72%	72%
Grade 3	62%	62%	62%	69%	65%	70%
Grade 4	54%	61%	62%	63%	67%	71%
Grade 5	60%	57%	61%	64%	66%	71%
Grade 6	56%	57%	65%	60%	67%	73%
Grade 7	62%	64%	67%	73%	65%	70%
Grade 8	60%	66%	68%	72%	67%	72%
Grade 10	65%	67%	73%	71%	66%	69%



*Hawaii Statewide Assessment Program
Mathematics Percent Proficient
2007~2012*



	Year					
	2007	2008	2009	2010	2011	2012
Math AMO	28%	46%	46%	46%	64%	64%
Grade 3	49%	52%	48%	58%	63%	67%
Grade 4	48%	49%	50%	50%	61%	63%
Grade 5	40%	44%	46%	47%	58%	62%
Grade 6	39%	42%	44%	50%	52%	58%
Grade 7	37%	40%	47%	52%	52%	56%
Grade 8	26%	35%	39%	44%	53%	58%
Grade 10	29%	34%	34%	38%	39%	45%



*Hawaii Statewide Assessment Program
Science Percent Proficient
2010~2012*

	Grade 4	
	Grade 6	
	Grade 8	
	Grade 10	

	Year		
	2010	2011	2012
Grade 4	49%	43%	45%
Grade 6	41%	#N/A	#N/A
Grade 8	#N/A	26%	31%
Grade 10	27%	22%	22%